



ICA
Congregational
Meeting

April 17, 2024



Agenda

- Opening prayer
- Introductions
- Food Prices
- March Food Share Results
- How your church can help!



ICA Opening Prayer

Gracious God, we give you thanks for the day.
Help us grow in love and be open to Your
grace as we seek to serve the needs of our
neighbors. Amen.



Introductions

Hello
my name is

Name
Church
March Food Share

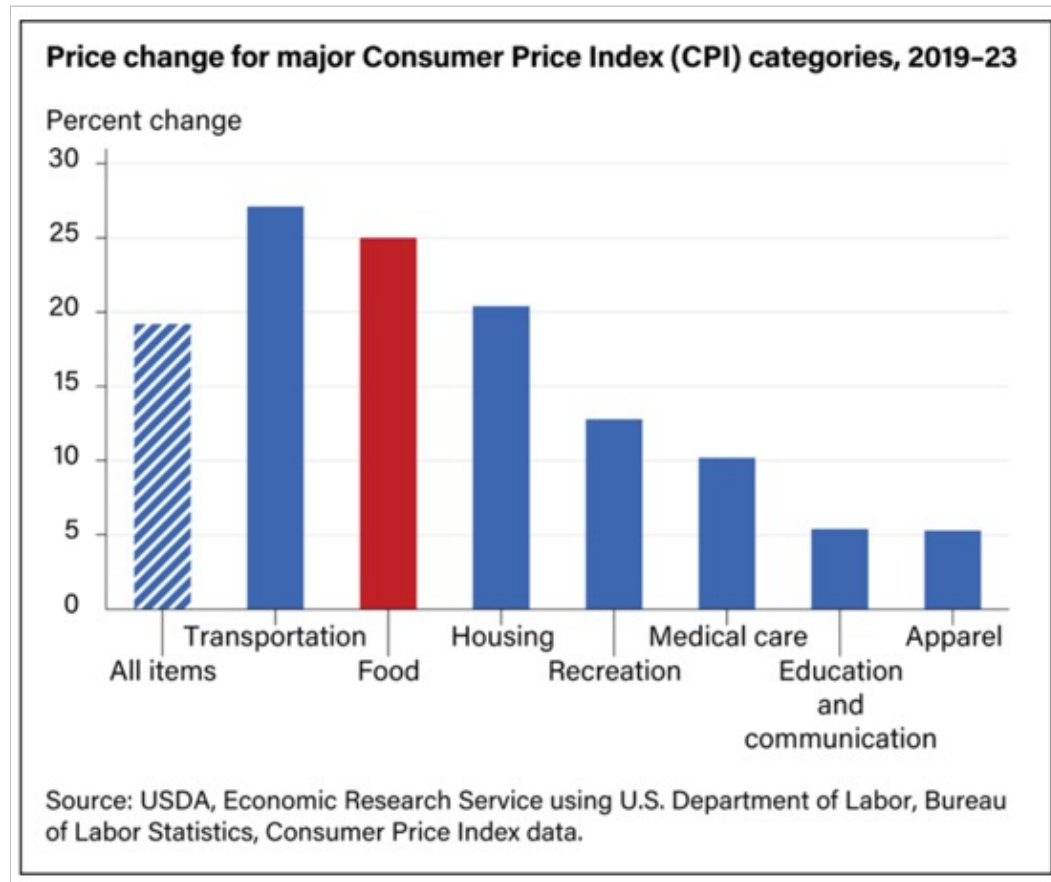


Rising food prices

According to Errol Schweizer, a food industry expert with 25 year of experience, writing for Forbes Magazine in February 2024, “Grocery prices are 30% higher than four years ago.”



High food prices

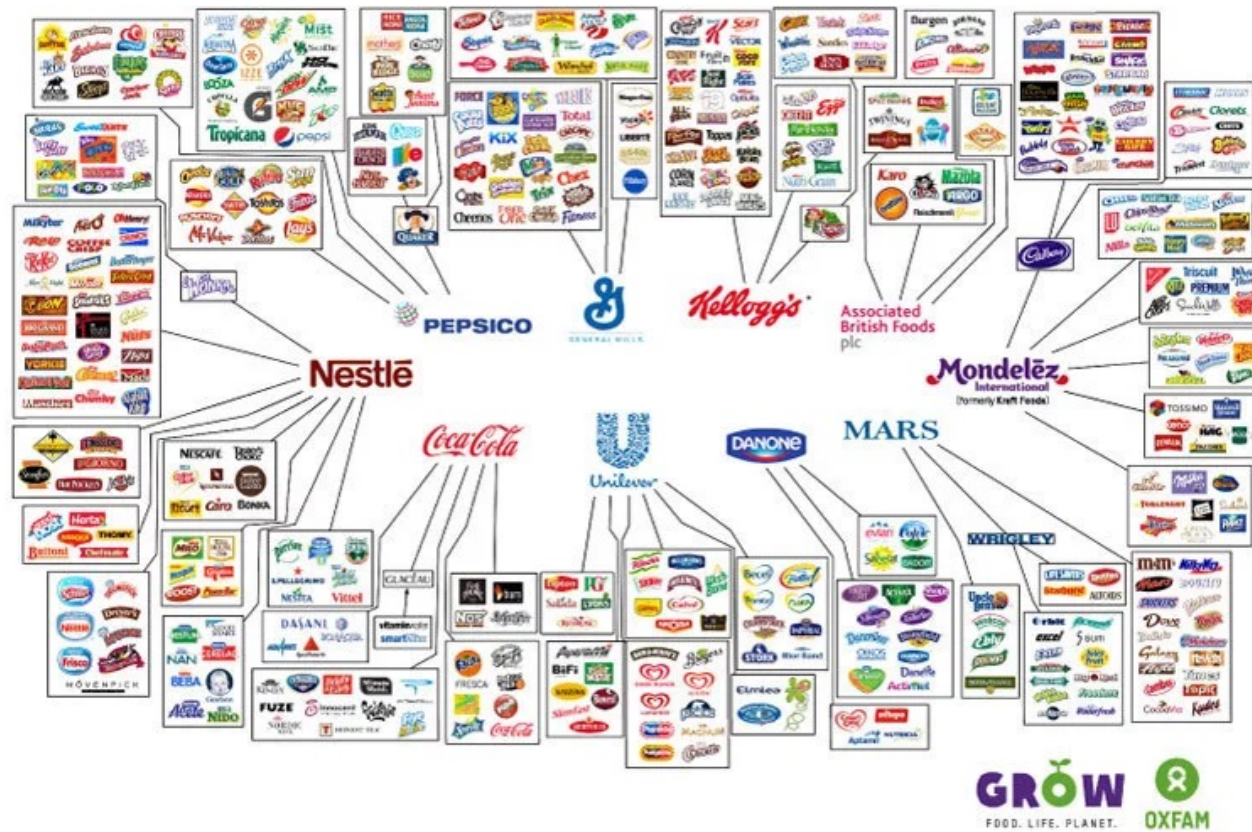


Why are food prices so high?

Pandemic supply chain issues
War in Ukraine – Grain and Oil
Avian Flu
Climate Change
Transportation costs
Global food company profits



Global food companies



Global food supply

“Almost 80% of dozens of everyday grocery items are supplied by just a handful of companies”

Source - [The Guardian Online](#)

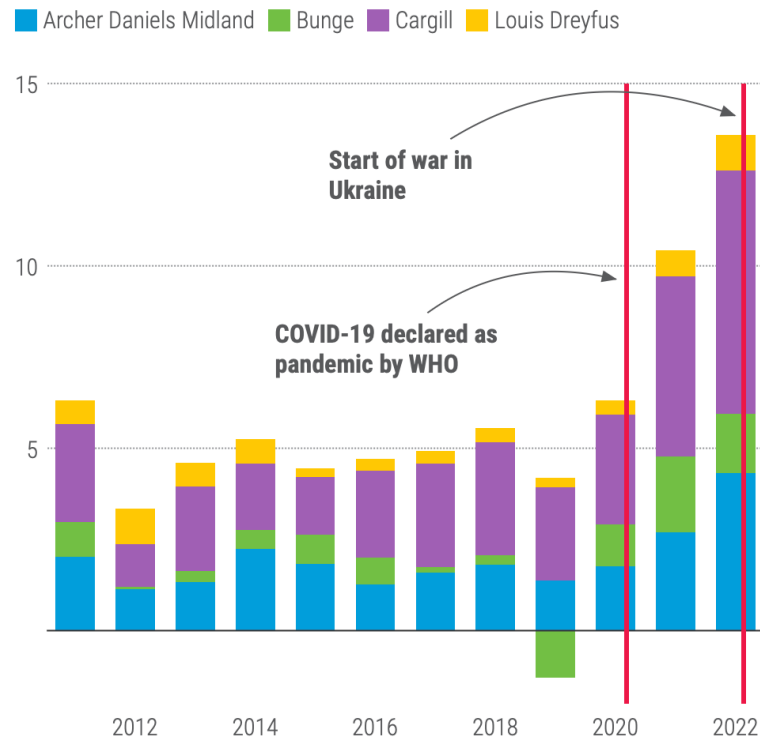


Why are food prices so high?



Profiteering in times of crisis

Profits of selected large agricultural trading firms, billions of current US dollars



Note: Cargill's 2011 profits do not include the sale of its stake in the fertilizer group Mosaic that year.

Source: UNCTAD calculations based on Eikon Refinitiv, and Louis Dreyfus Commodities' Financial Results Reports (various issues). • [Get the data](#)



Why are food prices so high?

Cal-Maine Foods

 **718%**

\$40 million to \$323 million

INCLUDES EGG-LAND'S, LAND O' LAKES,
FARMHOUSE AND 4-GRAIN



Why are food prices so high?

Kraft-Heinz

 **448%**

\$255 million to \$887 million

INCLUDES KRAFT, HEINZ, OSCAR MAYER, JELL-O, ORE-IDA,
LUNCHABLES, SMART ONES, WEIGHT WATCHERS, KOOL
AID, CAPRISUN AND PHILADELPHIA



Why are food prices so high?

Conagra brands

 **56%**

\$219 million to \$342 million

INCLUDES MARIE CALLENDER'S, REDDI-WIP, SLIM JIM,
DUNCAN HINES, ORVILLE REDENBACHER AND HUNTS



Why are food prices so high?

How does this information grab you?

Source for previous slides

Cal-Maine Foods Feb. 26, 2022 to Feb. 25, 2023

Kraft-Heinz Dec. 25, 2021 to Dec. 31, 2022

Conagra Brands Feb. 27, 2022 to Feb. 26, 2023

TIME



What does this mean for our community?

The average shopper is spending significantly more money and bringing home significantly less food.

Rising food costs are especially difficult for people with fewer resources because they spend a larger percentage of their income on food.



What does this mean for ICA?

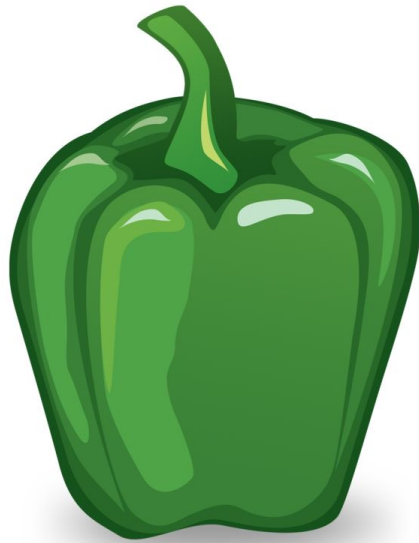
There is a double impact...

We continue to see high levels of need and...
ICA's food prices continue to grow.

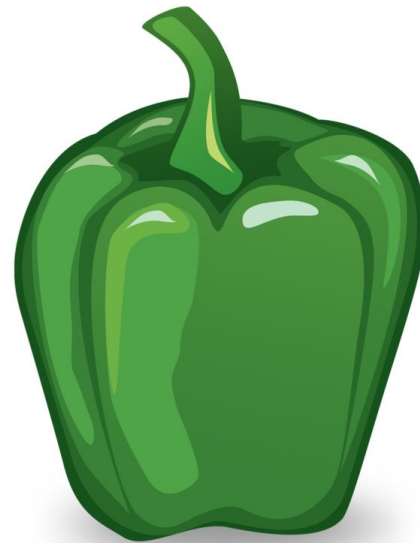


For example...

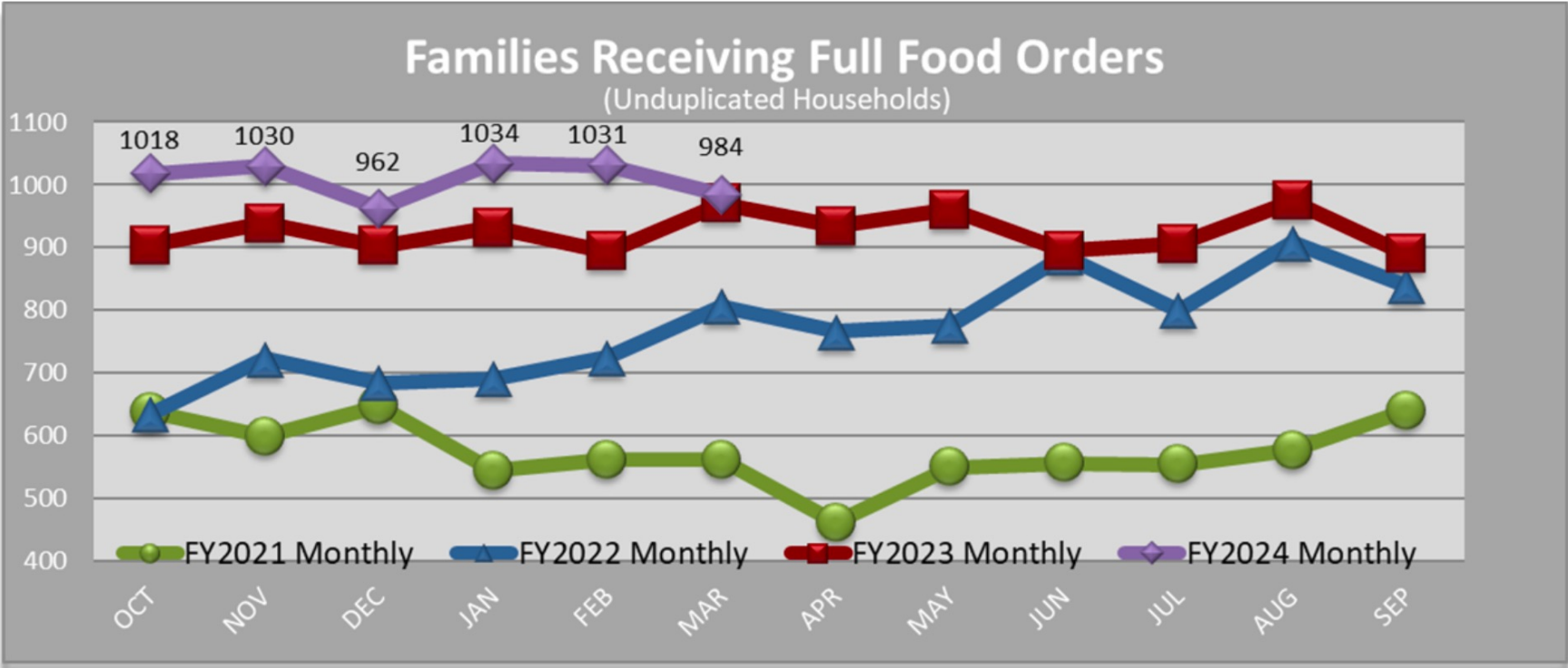
In February cucumbers went up from \$30 to \$51 per case, and green peppers went up from \$30 to \$44 per case



Pause for discussion...



Current trends



Thank you!



Our 2024 Results

135,651 pounds of food – 42% increase!

\$263,595 in donated funds – 10% increase!



Ways You Can Help Postal Drive – May 11st!



**LETTER CARRIERS'
DONOR DRIVE**



Ways You Can Help

- VBS – Birthday Bags!
- Summer Recurring Giving Campaign
- Fall Preview
 - Great Taste – October 8th
 - Give to the Max Day – November
 - Turkey Drive
 - Christmas for baby Jesus
- Church Council Tours
- Mission Teams Tours
- Invite a speaker from ICA



Story of Hope

From Kerri Fisher

A story about Michelle

Other news from the pews?





ICA Congregational Meeting

Next Meeting
September 11, 2024

